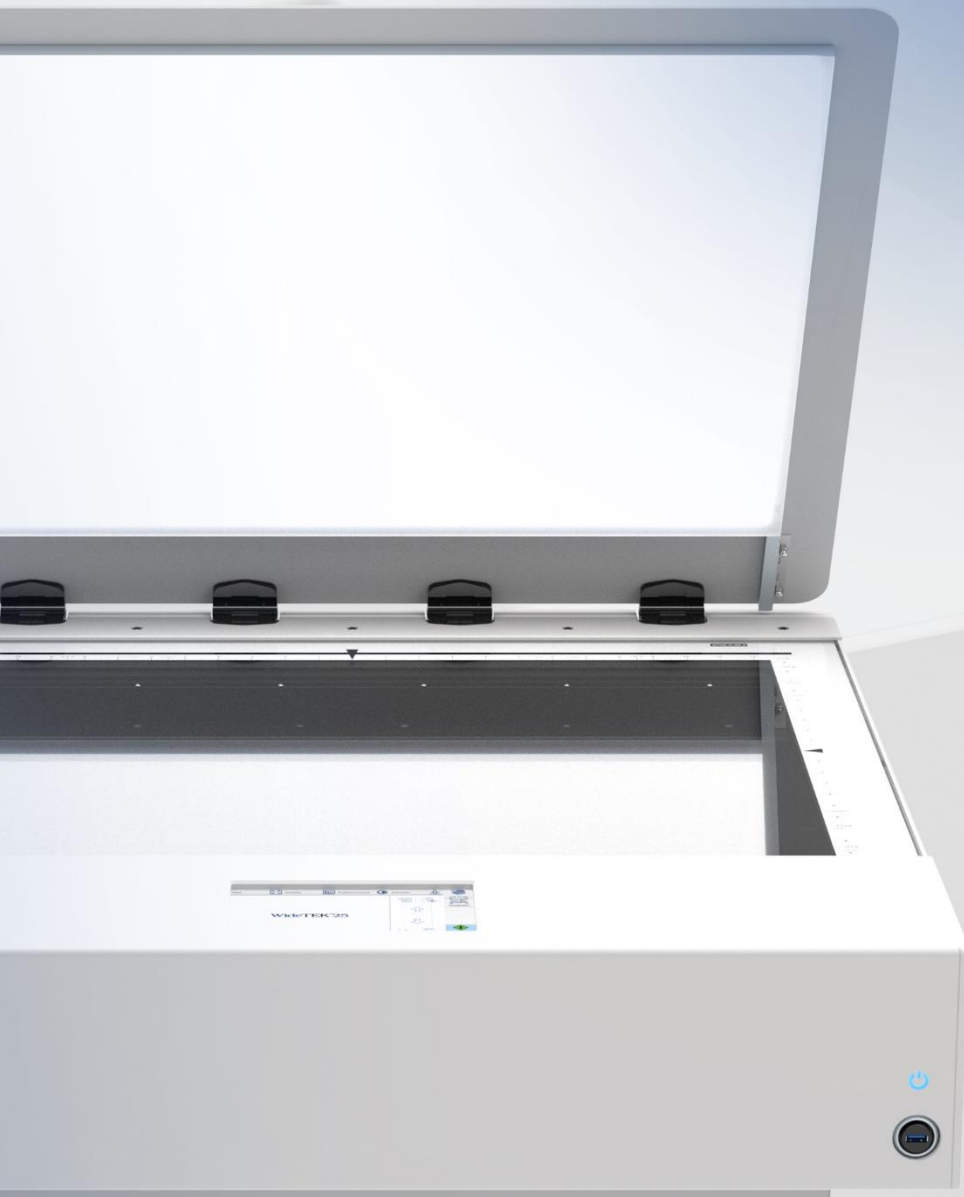


**WideTEK<sup>®</sup>**  
**Accessories**  
**Backlight Unit**

*Scan X-Rays and other transparent material with the optional backlight unit*



***World's most compact DINA3 / DINA2 flatbed scanners with 3D scanning just got better with the backlight unit***



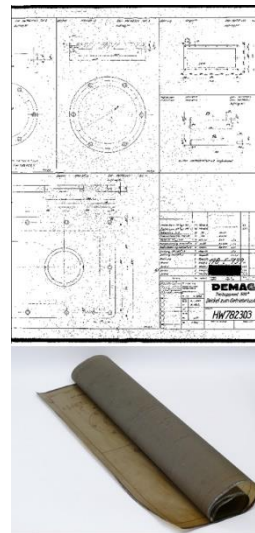
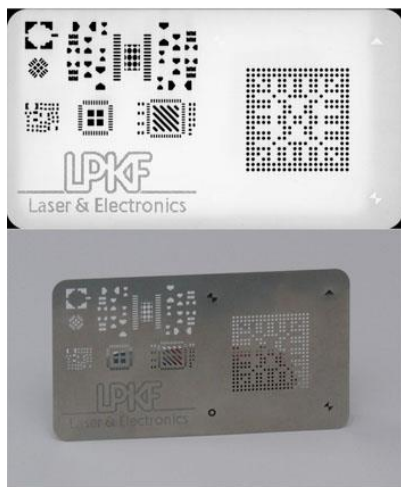
© 05-2019 / EN

## WideTEK® 12 / WideTEK® 25 Backlight Unit for Film, X-Rays and other Specialty Scans

For digitizing film footage, X-rays and other transparent material, an optional backlight unit is now available for the WideTEK 12-650 and WideTEK 25-650 flatbed scanners. The BACKLIGHT is integrated in the scanner lid and can be easily installed by the user, enabling both normal and transparent source material to be scanned.

The backlight unit enhances the already impressive functionality of this flatbed scanners. It can scan both reflective originals as well as transparent material in the same resolution of up to 1200 dpi optical and using 3D surface scanning techniques if desired. There are many film scanners available on the market for small image formats and even medium sized images, but in the large format range, film scanners are very rare and/or prohibitively expensive.

WideTEK® 12 and WideTEK® 25 are unbeaten in speed and image quality. Adding this option enables operators to scan medium format and large format films and glass negatives in less than 6 seconds at 600 dpi. This enhancement to WideTEK® 12 / WideTEK® 25 makes them even more powerful production scanners for nearly any industry.



Scan results from the WideTEK 25 with backlight unit. The top images are scans of source material using the backlight unit, below them are high quality photos.

## TECHNICAL DATA

	WideTEK® 12	WideTEK® 25
Dimensions	40 x 420 x 627 mm (1.6 x 16.5 x 24.7 Zoll) (H x B x T)	40 x 743 x 626 mm (1.6 x 29.3 x 24.7 inch) (H x W x D)
Weight	approx. 3 kg / 6.6 lbs.	4.1 kg / 9 lbs.
Electrical Connection	100 – 240 V AC, 47 – 63 Hz (external power supply, complies with ECO standard CEC level VI)	100 – 240 V AC, 47 – 63 Hz (external power supply, complies with ECO standard CEC level VI)
Power Consumption	< 0.5 W (Off) / < 50 W (On)	< 0.5 W (Off) / < 100 W (On)
Operating Temperature	5 to 40 °C, 40 to 105 °F	5 to 40 °C, 40 to 105 °F

## Features of the WideTEK® 12 / WideTEK® 25 Scanners

- Scan the full document bed in < 3 seconds
- 48 bit color depth
- Captures 3D surfaces, textures of various materials, Braille print
- 1200 x 1200 dpi scanner resolution
- Automatic crop and deskew
- Small footprint, 30 inch width, fits on any desktop
- Scan2USB – Walk up scanning to a USB device
- Scan2Print – Copy to networked printers or hot folders
- Scan2Network – Output to network resources, SMB, FTP
- Output formats: PDF, PDF/A, JPEG, TIFF, PNM, multipage PDF and TIFF, DICOM and many more
- Scan2Pad® – Operation via tablets or other mobile devices

ScanWizard uses any browser: IE, Safari, Chrome, Firefox

## Market Applications of the WideTEK 12® / WideTEK® 25 with Backlight Unit

- Scan X-rays, glass photo negatives, 35mm microfilm aperture card conversion/archiving
- Digitize cut-out originals and stencils and use the 3D surface scanning functionality for even more detail



### IMAGE ACCESS GMBH

Hatzfelder Str. 161-163  
42281 Wuppertal, Germany  
Phone: +49 202 27058-0

[www.imageaccess.de](http://www.imageaccess.de)

### IMAGE ACCESS LP

2511 Technology Drive, Suite 109  
Elgin, IL 60124, USA  
Phone: +1 (224) 293-2585

[www.imageaccess.us](http://www.imageaccess.us)