

Bookeye® 5

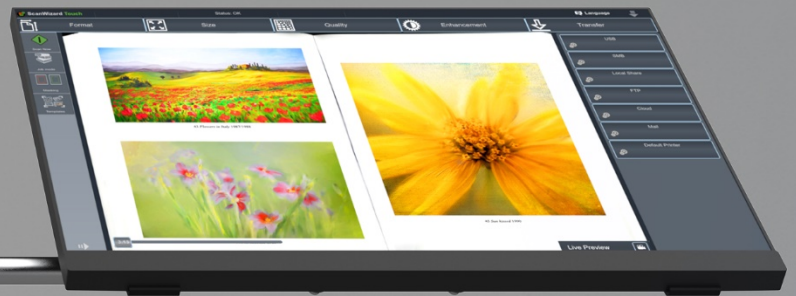
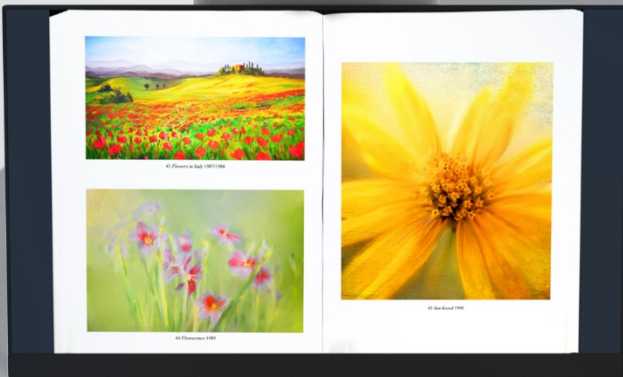
V3 Basic | Kiosk | Professional
Highest scan quality at lowest cost
Three models suit all applications

Bookeye 5 V3

Next Generation!

Bookeye 5

Kiosk



Next generation book scanner
Powerful, yet small and affordable

Image
Access

© 06_2020 / EN



- COLOR OVERHEAD BOOK SCANNER
- SCAN AREA 50% MORE THAN DIN/ISO A3
- TRUE SCAN TECHNOLOGY, NOT A DIGICAM SUBSTITUTE
- FADGI, METAMORFOZE, ISO 19264-1 COMPLIANT
- 400 DPI RESOLUTION
600 DPI OPTIONAL
- 0.8 SEC FOR A3+ SCAN
- V-SHAPED MAGNETICALLY COUPLED BOOK CRADLE OPENS 120° OR 180°
- LASER ASSISTED BOOK FOLD CORRECTION
- AUTOMATIC FINGER REMOVAL
- AUTOMATIC CROP AND DESKEW
- VIRUS PROTECTED 64BIT LINUX OPERATING SYSTEM
- INTEL QUAD CORE I3 GEN.8
240GB SSD, 8GB RAM
- GIGABIT TCP/IP NETWORK INTERFACE
- LARGE 21" FULL HD MULTITOUCH FOR SIMPLIFIED OPERATION
- VIRTUAL RESCAN, MODIFY WITHOUT RESCANNING
- LIVE PREVIEW THROUGH SECOND MATRIX CAMERA
- EASY 3 BUTTON ACCESS START, SCAN, SEND
- USB 3.0 PORT ACCESSIBLE ON FRONT PANEL
- EASY INSTALLATION VIA SCAN2NET® TECHNOLOGY
- OPTIONAL SCAN2PAD® HOTSPOT



The Bookeye® 5 V3 book scanner is available in three models, all simple to use and small enough to sit on any desk or workspace. Installation is so simple; you will be scanning minutes after taking it out of the box. Easy, fast and affordable. The Bookeye® 5 V3 book scanner is perfect for libraries, archives, offices and anywhere you want to scan or copy.

All models include a 21" full HD multitouch screen, three direct control buttons for fast and effective scanning and the acclaimed Scan2Net® technology platform.

Bookeye® 5 V3 Overhead Book Scanner

Fully reengineered, the Bookeye® 5 V3 is the first member of a new generation of eco-friendly, ergonomic and easy to operate book scanners. It is equipped with a high resolution, low noise CCD scanner camera and an additional matrix camera for live previews.

Bookeye® 5 V3 is available in three models:

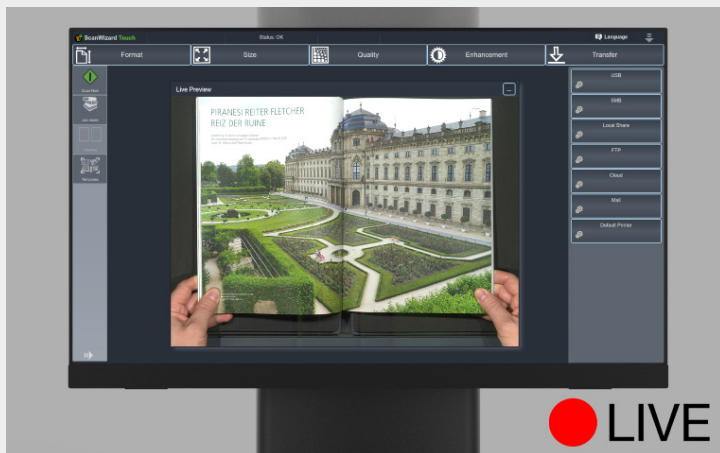
Basic The entry level model offers the same scanning functionality and speed as the other levels at the lowest possible cost. Upgrades to the other models are options.

Kiosk This model includes all of the features of the Basic model plus the Scan2Pad application for scanning and operation with any mobile device through the WiFi hotspot.

Professional This model includes all of the features of the Basic model, but has a higher resolution of 600 dpi and client interface for 3rd party software to meet the highest quality standards.

The unique book cradles allows users to digitize books and documents by either laying them flat on the scanning bed at 180° or in the V-cradle, at an angle of 120° for gentle, protective handling of the source material. The two sides of the cradle are magnetically coupled so that the book fold can be moved easily in the center for optimal scan results.

Bookeye is the eco-friendliest scanner on the market, consuming only 1.5W in standby. Its high quality LED lamps only light up when needed, saving even more energy.



Live preview camera to optimize document position before scanning

Highlights that make the Bookeye® 5 V3 book scanner the right choice for every application

- Large 21" multitouch screen for operation and preview can be mounted to scanner in three different locations.
- Optional 2nd screen supported for preview.
- Dark mode operation – enhances scan quality through less light reflection and improves operation by reducing eye strain.
- Live Preview – See the document position in live video for correct positioning before scanning.
- Most versatile book cradles, 120°, 180°, shift apart for book bound, shift left and right for optimum position of book.
- Output formats: PDF, PDF/A, JPEG, TIFF, PNM, multipage PDF and TIFF, DICOM and many more.
- Digital color balance, wide color gamut, supports sRGB, Adobe RGB, native RGB.
- FADGI, Metamorfoze Light, ISO 19264-1 compliant.
- Multilingual operation – more than 20 languages available.
- ScanWizard runs on internal touch or on external device through any browser via network.
- Remote maintenance, troubleshooting and firmware updates.

Accessories and Options:

BE5-SCAN2PAD

Scan2Pad® wireless hotspot.

BE5-V3-PRO-OPT

Upgrade to Professional.

BSW-P-BE5-00

Batch Scan Wizard Pro License.

SCAN2OCR

Background OCR on scanner.

BE5-V3-BK-SP12M

Full Coverage Warranty, up to 5 years of free spare parts and consumables.



Store images directly to any USB devices via the USB 3.0 port

Bookeye® 5 Models and Bundles

BE5-V3	Basic – entry level model 400dpi, V-book cradle, 21" touchscreen
BE5-V3-KIOSK	Kiosk – perfect for self-service applications Basic + Scan2Pad, Full Coverage Warranty
BE5-V3-PRO	Professional – 600dpi for demanding applications Basic + 600dpi, Full Coverage Warranty

Bookeye® 5 Applications

- Preserving books and sensitive historical documents
- Scan newspapers, periodicals, catalogs and magazines
- Scan and store images to mobile devices with Scan2Pad®

Bookeye® 5 Markets

- Libraries, Universities, Repro shops
- Archives, Government, Registries, Military
- Any office environment

The Scan2Net® platform is the technological foundation of all WideTEK® and Bookeye® scanners from Image Access. It replaces the proprietary scanner drivers and software that traditional scanners require with the fastest common, nonproprietary inter-device connection available: TCP/IP over Ethernet. With network interface speeds much higher than USB 3.0 or camera link, Scan2Net® devices are able to reach unrivaled performance at extremely low connectivity cost.

Scan2Net® scanners feature a 64 bit Linux based real time operating system, dedicated to scanner specific imaging and mechanical control tasks, maximizing scanning speeds and performance.

Scan2Net® Advantages

- 64 bit Linux based computer, fast and virus protected
- Routable, easy integration into existing network structures
- Only a single IP address is required to run the scanner
- Integration and remote access via the Intranet or even the Internet
- Scans directly to SMB, FTP, hot folders, USB, Email or the Cloud
- All hardware and software built in, no need for external PCs
- Simple, intuitive operation via full HD touchscreen
- Clear menu structure, help files build in
- Multilanguage support, customizable user interface

TECHNICAL DATA

Maximum Scan Area	390 x 480 mm (15.3 x 18.9 inch), 50% more than DIN/ISO A3
Scanner Resolution	400 x 400 dpi (optionally 600 x 600 dpi)
Scan Speed	DIN A3+ @ 150 dpi: 0.8 s, DIN A3+ @ 200 dpi: 0.9 s, DIN A3+ @ 300 dpi: 1.3 s, DIN A3+ @ 400 dpi: 1.7 s
Color Depth	48 bit color, 16 bit grayscale
Scan Output	24 bit color, 8 bit grayscale, bitonal, enhanced halftone
File Formats	Multipage PDF (PDF/A) and TIFF, JPEG, JPEG 2000, PNM, PNG, BMP, TIFF (Raw, G3, G4, LZW, JPEG), AutoCAD DWF, JBIG, DjVu, DICOM, PCX, Postscript, EPS, raw data and more
ICC Profiles	Embedded for sRGB, Adobe RGB and native. Individual profiling via web based Scan2ICC subscription
Quality	Complies to FADGI *** guidelines, Metamorfoze Light, ISO 19264-1
Camera	CCD line sensor, 22,500 pixels (11,000 scan lines equals to a 245 MPixel matrix camera)
Live Preview Camera	CMOS matrix, area sensor
Light Source	White LEDs, tested according to IEC 62471, no IR/UV emission
Lamp Lifetime	50,000 h typ. Lamps are covered by the Extended Warranty Option
Computer	64 bit Linux, Intel Core i3 generation 8 processor, 240GB SSD, 8 GB memory for extra large jobs
Touchscreen	21" full HD 1920 * 1080 multitouch screen
USB Port	1 x USB 3.0 port, 4 x USB 2.0 port
Interface	1 GBit fast Ethernet with TCP/IP based Scan2Net® interface
Dimension / Weight	H x W x D: 720 x 510 x 540 mm (28 x 20 x 21 inch) / 29 kg (64 lbs.)
Electrical Specification	100-240 V AC, 47 - 63 Hz (external power supply, complies with ECO standard CEC level VI)
Power Consumption	< 0.5 W (Sleep) / 1.5 W (Standby) / 40 W (Ready to Scan) / 110 W (Scanning)
Environment	Operating temperature 5 to 40 °C (40 to 105 °F), relative humidity 20 to 80% (non-condensing)
Noise	< 42 dB(A) (Scanning) / < 33 dB(A) (Standby)
Approvals	IEC/EN/AUS/NZL 62368-1, CB; UL/CSA 62368-1, FCC part 15, ETLus, EN 55032, EN 55024, EN 61000-3-2, EN 61000-3-3, CCC, BIS, RoHS, WEEE



Visit our homepage!

IMAGE ACCESS GMBH

Hatzfelder Str. 161-163
42281 Wuppertal, Germany
Phone: +49 202 27058-0

www.imageaccess.de

IMAGE ACCESS LP

2511 Technology Drive, Suite 109
Elgin, IL 60124, USA
Phone: +1 (224) 293-2585

www.imageaccess.us